

Report of Activities for 2021

DECEMBER 2021



Chair's Introduction

The recognition that we need to act now and decisively to help nature recover from its catastrophic losses seems to have become much more widely accepted during 2021 than ever before. It feels as if the political momentum and, above all, public consciousness of this crisis, has finally reached a tipping point. If all the promises that have been made and commitments that are in the pipeline are realised, then finally those of us who cherish nature, both intrinsically and practically, should have cause, after many years of frustration, to cheer and look forward to a brighter, nature-enriched future for our world, our country and for Cambridgeshire and Peterborough.

In our area alone, the Doubling Nature agenda is supported by all our local authorities and by both our past and current elected Mayors. We have a County Council that has made the climate change and biodiversity crises its top priorities. The Independent Commission for Climate made the acceleration of the Doubling Nature objective one of its core recommendations. And we have countless examples of local communities taking action to plant trees, dig ponds and create wildflower meadows. Government policies as set out in the 25-year Plan for the Environment, the obligation of biodiversity net gain and the emerging Environmental Land Management Schemes seem set fair to deliver positive outcomes for nature. And we have landowners, farmers and business leaders espousing the cause too.

Natural Cambridgeshire is not a delivery body itself, but its partners are – and as our recently compiled State of Nature Report makes clear, those partners are taking action. We see real progress in the huge landscape scale projects being driven forward by the RSPB at Ouse and Block Fen, by the Wildlife Trust at the Great Fen and by the National Trust at Wicken Fen. Two of Natural Cambridgeshire's priority projects; the Cambridge Nature Network and the John Clare Countryside, are both making positive strides forward with welcome funding from the Government's Green Recovery Challenge Fund. There are great examples of landowners and farmers making space for nature too, and the support of this community for our plans is both crucial and generally very positive. And for me personally, even more exciting is the wave of local action that we are seeing emerge organically. The villagers of Maxey have planted two new hedges; at Castor they are creating a new wildflower meadow; while the Friends of the Woodland Garden in Littleport have created new woodland habitat at Peacock Meadows; and the parishoners of Barrington are restoring the pond on the village green.

So, our Doubling Nature is happening. And the partners within Natural Cambridgeshire should take pride in their role in enabling this. As a partnership our role is to lobby, influence and show the evidence as to why we must restore our natural environment. We have done that and helped to put our ambitions at the top of the public policy agenda.

But my fear is that as of yet, we are not doing nearly enough. The policies are all in place or at least emerging, the political will seems to be there, the public want this to happen, but I don't see the dramatic shift in delivery that is really needed. Progress is slow and the resources required to make things happen are limited. Given the amount of funding that will go into rail, road and housing projects in the years to come, we need to see a corresponding commitment of public and private money for nature.

Natural Cambridgeshire is making the case strongly for more positive action on the ground and will continue to do so. We are working with our partners to establish a multi-million-pound fund for nature and we will be making the case to Government, both local and national, and business to invest in it. And we will be encouraging all of our statutory partners to put their commitments into practice.

2022 has to be a year of delivery. How many times have we written that as new years dawn? But just think how possible this is? If every public sector organisation took action to double nature on their land – schools, hospitals, the Environment Agency, Forestry Commission, Highways Agency etc etc – and if every community in the county planted 20 trees a year – that would make a noticeable difference. And if we can couple that public and community action, with widespread take up of the new agri-environmental subsidy regimes and the implementation of biodiversity net gain policies, then perhaps we will deliver our ambition.

There really isn't much to stop this from happening. Our ideas are simple and practical, and are relatively cheap too. They will make a difference to the places we live in – urban and rural – and the landscapes we cherish and enjoy. They will make this a better place to live and improve our quality of life.

We have many partners to thank for their hard work and support over the last year, particularly our funding partners who are listed later in this report and, of course, our Trustees and our tireless co-ordinator, Helen Dye. I am personally indebted to them all. But in thanking our partners and recognising how far we have come and the platform that has been created for natural transformation – let us not forget just how much we have to do now and how existentially important it is.



Richard Astle

Chair, Natural Cambridgeshire

2021, Our first year as a charitable incorporated organisation

Natural Cambridgeshire is the Local Nature Partnership for Cambridgeshire and Peterborough. This is reflected in the make-up of its board and membership, all of whom are committed through the work of their organisations, or as individuals, to the enhancement of biodiversity for the benefit of the people of Cambridgeshire.

Our plans to Double Nature were launched in summer 2019 with the full support of the Cambridgeshire and Peterborough Combined Authority and all other Local Authorities in the county. Through advocacy, lobbying and facilitation we have worked hard, and with considerable success, to embed the principle of Doubling Nature in decision-making at all levels. In achieving this we not only help nature to recover, but we also enhance public access to the countryside to promote health and well-being, improve air and water quality, mitigate flood risk, store carbon and make our county a more attractive place in which to live, to work and to visit.

To provide a focus for the delivery of Doubling Nature ambitions, six priority landscapes have been identified around which partnerships have been and are being built. These six landscapes are: John Clare Countryside; the Nene Valley; the Connected Fens; the Great Ouse Valley; the Cambridge Nature Network; and the West Cambridgeshire Hundreds.

In addition, an offer to communities to enable local people to improve nature where they live, through the promotion of a Nature Recovery Toolkit, access to advice and grant funding and support for volunteering, is being piloted and actively developed.



Our board

The Natural Cambridgeshire trustee board meets six times a year to agree priorities and set direction of travel. Its present trustees are:

Richard Astle, Chair

Martin Baker

Matthew Bradbury, Vice-Chair (acting)

Major Tim Breitmeyer DL (from 8 December 2020)

Rebecca Britton

Cllr Pippa Heylings (from 8 December 2020)

Professor Peter Landshoff

Carly Leonard, Treasurer (acting)

Dr Roger Mitchell, Secretary (acting)

Sarah Smith

John Torlesse

Hannah Ward

Rob Wise (from 5 October 2021)

Cllr Hilary Cox-Condron (from 3 August 2021)

During 2021, advisors to the board have included: **The Hon. Matthew Bullock**, founder of Cambridge Ahead; **Adrian Cannard**, Strategic Planning Manager for the Cambridgeshire and Peterborough Combined Authority; **Professor Ian Hodge**, University of Cambridge; and **James Littlewood**, Chief Executive Officer, Cambridge Past Present and Future.

Our activities

Natural Cambridgeshire trustees and the organisation's co-ordinator, Helen Dye (appointed January 2021), speak up and out for nature recovery on key strategic projects throughout the county, including the Oxford-Cambridge Arc, the Fenland Water Partnership, Future Fens, the Fens Biosphere and the Cambridgeshire and Peterborough Future Parks initiative, and participate in Water Resources East meetings towards an integrated water resource management strategy for the region. Our chair, Richard Astle, has been a member of the Cambridgeshire & Peterborough Independent Commission on Climate and has been invited by the Mayor, Dr Nik Johnson, to join a Climate Working Group, to turn the recommendations of the Commission's initial report into a more ambitious, comprehensive and public-friendly Action Plan.

Our work with partners

A proposal to provide the resources to undertake a comprehensive ecology baseline exercise to inform habitat improvement plans across the county has been prepared by trustee Martin Baker and submitted to the Combined Authority for consideration in their current business planning round.

With the changing policy landscape, and with particular reference to the passing of the Environment Bill by parliament and the fact that Cambridgeshire is such a nature depleted county, Natural Cambridgeshire has been advocating a 20% biodiversity net gain requirement for developments in the county. This has been championed by Natural Cambridgeshire trustees, Martin Baker and Professor Peter Landshoff, through what has become the **Natural Environment Policy and Planning Forum**. This Forum is convened to bring together planners and environmental policy specialists from local authorities to share news and plans, to problem solve and to hear from subject matter experts about latest policy developments and implementation expectations that will affect the natural environment. The agenda for this Forum is very much set by, with and for local authority officers who met three times in 2020, with up to 25 in attendance each time. Subjects discussed included the Environment Bill and biodiversity net gain, the principle of a Land Use Framework, the concept of a Local Environmental Governance Organisation, devolved decision-making, and water resources and water resource management.

The **Partnership Forum** is a broader body with the function to ensure communication and engagement with and between all those interested in the natural environment locally. In 2021, the Partnership Forum convened online four times, once in March, June, September and December, attracting around 80 participants on each occasion to listen to between six to eight speakers over the course of two hours. Participants included representatives from: public bodies including local authorities, the Environment Agency, Natural England and the Forestry Commission; conservation and environmental charities including the WT BCN, RSPB, the National Trust, the Woodland Trust, the Peterborough City Environment Trust, the Nene Park Trust and the Cam Valley Forum; farmers, landowners and land managers; umbrella organisations





including Water Resources East and Campaign for the Protection of Rural England; businesses including farmers and food producers, land agents, technology and biotechnology companies, developers, legal firms and innovation organisations; utility companies, including Anglian Water and Cambridge Water; social enterprises; higher education institutions including the University of Cambridge and Anglia Ruskin University; and churches including the Diocese of Ely.

Speakers included local and national leaders from the domains of public policy, conservation practice, planning, politics and academia covering themes ranging from priority landscapes and the activities of the

county's leading conservation organisations, to good practice in local planning, tree-planting strategies and nature-friendly Farming. Other subjects included COP26, what communities can and are doing to 'Double Nature' where they live, and prior to the elections in May contributions from the Mayoral candidates who told us what they would do to 'Double Nature' if they were elected.

The **Developing with Nature Forum** continues to extend its membership and over the course of 2021 has included discussions on Biodiversity Net Gain measurements and approaches; implications, opportunities and approaches of 10% Biodiversity Net Gain for developments; a best practice workshop on urban greening; mainstreaming swift bricks into house-building and exploring a strategy for Cambridgeshire developments. Workshops over the winter with both Natural Cambridgeshire partners and with key members of the Forum will set the future agenda for 2022, and update a governance structure to reflect the growing membership of the Forum.

Throughout the year we have, as part of the project's Executive Committee, worked with the **Cambridgeshire and Peterborough Future Parks Accelerator**. The role of our public parks in improving public health and wellbeing, as well as connecting local people with green space in their communities, is immense. The role of parks, particularly in respect of stepping stones within local nature recovery networks in urban areas, will also be tremendously important going forwards. We look forward to recognising, embracing and supporting this in any way we can into 2022 and beyond.

Our work with communities

Natural Cambridgeshire seeks to influence environmental action for public benefit from the top down and the bottom up, including a recognition of the important role that local communities have to play in improving nature where they live.

A pilot scheme to engage communities with the Doubling Nature agenda was launched in summer 2020 with the rural parishes west of Peterborough. All sixteen parishes are now involved and at various stages of creating and delivering their own individual nature recovery plans. Local people have embraced the opportunity to make a difference to their environment and a series of community planting days started as Covid-19 restrictions lifted in summer 2021.

Following on from this, Natural Cambridgeshire initiated a pilot small grants for communities programme in summer 2021 with aims to identify the barriers and enablers to community participation in local nature recovery, and to inform larger fundraising bids to help roll out further programmes in 2022.

Following the soft launch of the funding opportunity, 22 applications were received from all corners of the county, from community groups, churches, and town and parish councils in both urban and rural areas. Projects included wildflower and bulb planting, tree-planting, pond restoration and habitat enhancements on sites including village greens, parks and playing fields, urban estates, churchyards and community orchards and gardens. 9 grants were awarded. The findings from this pilot programme will inform the development of our offer to communities. This project has been nurtured and supported by the Natural Cambridgeshire Communities Working Group with financial support from the Cambridgeshire and Peterborough Future Parks project.



Our priority landscapes

Key to delivering Doubling Nature ambitions at scale and in the longer term is through our six identified priority landscapes:

John Clare Countryside

"As residents, businesses, parish councils, landowners, farmers and visitors we want the countryside around us to be an area where nature is at the heart of our lives: where swifts and swallows are a central feature of our summer evenings; where hares continue to enthral people as they play in the fields and meadows; where bees and other insects thrive, not decline, and where there are far more ponds, meadows, wild flowers, hedgerows and trees. We want people to be able to walk or cycle out in safety and tranquillity across this thriving countryside, enjoying the sights and sounds and even the silence of the natural world, enjoying dark skies and cherishing the heritage - both natural and man-made around them."

The John Clare Countryside project, launched in September 2019, aims to deliver this vision through the creation of an extensive and accessible nature recovery area across the landscape to the west and north of Peterborough, designed, led and supported by residents, landowners, farmers, businesses and parish councils. It will be distinguished from other nature recovery areas because it is community led and it combines both natural and built heritage with links through John Clare to literature and the arts. The overall agenda will promote the physical and mental health of its residents and the adjacent communities of Stamford and Peterborough. It covers an area of 11,500 hectares.

Specifically, the project aims to:

- Deliver significant increases in key wildlife habitats, particularly those of limestone grassland, wetland and aspects of arable farmland, which are important to this geographical area
- Raise levels of local pride, aspiration and community cohesion by helping communities to understand, appreciate and enjoy their natural and built heritage
- Pilot and champion best practice sustainable development in all aspects of future development within the area including sustainable techniques of land management both on and off the existing nature reserves
- Promote public health and wellbeing, providing opportunities for access to and understanding of nature-rich countryside

- Create new jobs and economic opportunities allied to the delivery of these objectives, particularly in tourism, visitor attractions, farming and nature conservation
- Through this work, create more resilient countryside and communities, where nature is at the heart of our approach to tackling the climate emergency.

During 2020 the partners launched the concept of parish nature recovery plans, encouraging each of the 16 parishes in the area to develop their own ideas for how nature can be helped in their area. A detailed guide was produced to help local residents complete these plans.

During 2021 and despite the restrictions caused by the pandemic all the parishes have taken steps to develop these plans and a number of planting days have taken place – particularly in the villages of Maxey, Barnack, Ailsworth and Castor. Volunteer work parties were also held with Burghley Estate to improve footpaths along the River Welland and with the neighbouring Walcot Estate to help develop new habitats for nature.



These plans took a significant step forward with the award of a major grant in summer 2021 through the Green Recovery Challenge Fund, which funded the appointment of a dedicated project team who are hosted and managed by PECT. This will allow the partners to accelerate the development of parish nature recovery plans across each of the 16 parishes in the area, with a series of community planting days taking place across winter 2021-22. It will also fund the creation of a new partnership website.

The funding will also help take forward discussions with major local landowners to put in place nature recovery plans across the area. Positive engagement has started with many local landowners – to date looking at hedge and tree planting on private land across the area – and we hope to build on this as the new environmental land management schemes emerge in 2022. The partners are developing detailed plans for five priority areas of habitat restoration, including focusing on recreating some of John Clare’s lost landscapes. These will be a priority in 2022.

An additional project in 2021 was the launch of the idea of creating a new nature reserve across the area made up of the individual commitments of local residents to leave an area of their garden for wildlife. So far, the partners have created a new reserve of 8000m² across 77 gardens.

Nene Valley

Activity has continued to be delivered by partners within the Nene Valley during 2021. This has included the final elements of the Nenescape Landscape Partnership programme, including:

- Bird surveys carried out by volunteers through 2020 and 2021 of the flagship wetland restoration project, Bring Nature Closer at Ferry Meadows. A visitor interpretation survey completed this Summer has also informed partners of the effectiveness of the new viewing platforms, interpretation and information boards:
<https://nenescape.org/news-and-features/flagship-site-survey>.
- Completion of the restoration project of the former Station Masters Garden in Castor. Nene Park Trust staff and volunteers revived the garden as a community space, where wildlife can thrive:
<https://www.nenepark.org.uk/station-masters-garden>.
- Engagement workshops have been undertaken to help design a digital heritage trail at Ferry Meadows, in partnership with One-to-One Development Trust.
- The final permissions have been granted for the reconnection and restoration of the historic Electric Cut backwater on the River Nene, to provide refuge and spawning areas for fish, working closely with Peterborough City Council.

In addition to this, initial scoping of restoration works within Nene Park Trust's land holding at West Holmes and Sutton Meadows has also commenced with support from the Wildlife Trust and the Environment Agency, with elements to be delivered in 2022. This includes working with neighbouring land owners and we will see the return of the RSPB's rotary ditcher to help re-profile scrapes and ditches to improve floodplain habitat for a variety of species.





Connected Fens

The Fens is an area of the county well-served with active partnerships and enthusiasm for working together to deliver for nature and climate action. The challenge for Natural Cambridgeshire's 'Connected Fens' was how to support this activity without creating another partnership or framework that would involve the same familiar faces and partners. To do this, Natural Cambridgeshire has aligned with the 'Fens for the Future' partnership to support delivery in the 'Connected Fens' priority landscape. This includes partners located in Lincolnshire, Norfolk and Suffolk as well as Cambridgeshire.

Highlights from 2021 include:

- The 'Fens East' partnership (a subset of 'Fens for the Future') developed a programme of 21 peat restoration projects to put forward to the DEFRA Nature for Climate Peatland Grant Scheme for a discovery grant. If successful these sites will undergo feasibility for full peatland restoration; giving future potential to restore one thousand hectares of peatland.
- The Wildlife Trust for Bedfordshire, Cambridgeshire and Northamptonshire have been awarded a Heritage Horizon award of over £8 million by the National Lottery Heritage Fund to take forward the next stage of the Great Fen. 'Peatland Progress: A New Vision for the Fens' will tackle climate change, biodiversity loss and the anxieties of the next generation head-on through the purchase of a parcel of land, bringing together the north and south 'halves' of the Great Fen. The partnership project will work to further develop a model of agricultural production that inspires and changes farming practice on peat soils across the UK, as trialled in the [Water Works project](#).
- 'New Life on the Old West' was launched during the last year. Delivered by Cambridgeshire ACRE and supported by the National Lottery Heritage Fund, the project will create a series of small-scale habitat improvements – ponds, scrapes and wildflower meadows – in the arable landscape, the extensive ditch network and community green spaces. So far 250 square metres of habitat has been created, 34 volunteers recruited and 11 activities delivered.

- The National Trust at Wicken Fen launched its 'Footprints' project also supported by the National Lottery Heritage Fund. The project will engage communities with the Wicken Fen Vision in a variety of new ways. Activities so far have included stargazing, field archaeology, community outreach and tree-planting. One thousand trees were planted over three days by volunteers and local people.

With several large projects starting in 2021, or due to start shortly, 2022 looks to be a year of delivery on the ground as well as looking forward to plan more projects identified in the 'Connected Fens' project pipeline.

Great Ouse Valley

2021 saw the formation of the Great Ouse Valley Partnership, which comprised of a group of organisations and individuals with an interest in protecting and enhancing this special landscape and its wildlife. The Partnership's purpose is to promote, support and deliver Doubling Nature in the Cambridgeshire Great Ouse Valley, securing recognition for this important landscape and its heritage. It has the following objectives:

- To increase the area of priority habitats (floodplain meadow, wetlands, wet woodland) managed for nature in the Cambridgeshire Ouse Valley, by creating new habitat for wildlife and improving the management of existing sites.
- To promote the adoption of nature-based solutions in the Cambridgeshire Ouse Valley contributing to reducing carbon emissions, improving water quality, managing flood risk, and delivering benefits for biodiversity and people.
- To provide advice to landowners and land managers to increase the area of farmed landscape in the valley with adopted sustainable and wildlife friendly farming practices.
- To develop the profile of Ouse Valley as an important place for wildlife and destination for access to nature and high-quality greenspace, improving visitor facilities in a way that complements the natural environment.



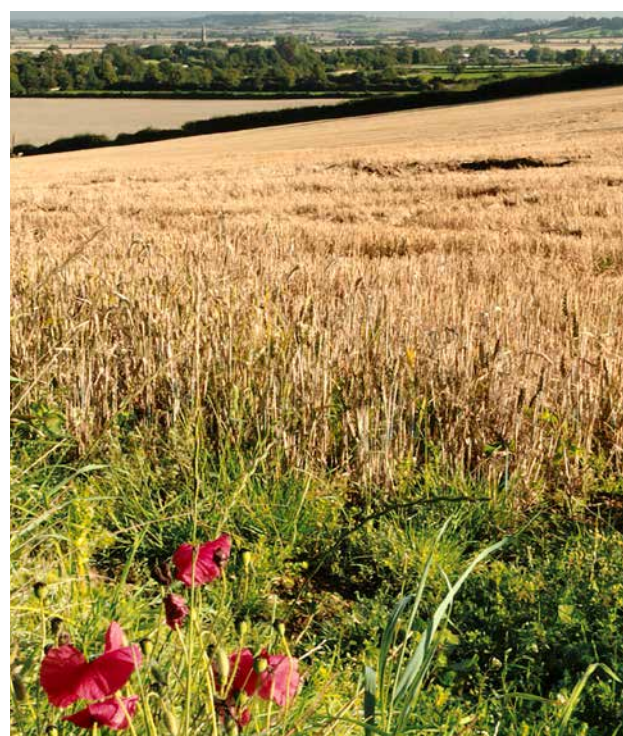
- To enable local community action in the valley to increase participation in Doubling Nature.
- To advocate for policies that will support the aim of Doubling Nature in the Cambridgeshire Ouse Valley.
- To support the development of a sustainable partnership through developing a pipeline of projects, monitoring progress, and supporting fundraising.

The Great Ouse Valley Trust have kindly offered to be the secretariat for the partnership as we take this exciting agenda forwards. Focus to date has been on establishing the partnership, agreeing priorities, objectives, and securing seed-corn funding to develop a programme of projects to benefit nature in the Ouse Valley and its residents. If secured, seed-corn funding will focus initially on developing an evidence base and mapping of opportunities to Double Nature in the landscape, supporting farmer led clusters and development of a community engagement plan.

West Cambridgeshire Hundreds

The West Cambridgeshire Hundreds farmer cluster is moving to a new phase with the landowners increasingly taking the lead. They continue to be supported by Farming and Wildlife Advisory Group (FWAG) East and the Wildlife Trust. Ten new landowners have recently been accepted into the group, including some within the core area and others extending the reach of the farmer cluster towards Cambridge and the Bedfordshire border.

The Wildlife Trust secured seed corn funding from Natural England to begin the process of developing a Nature Recovery Map for the area. Over the forthcoming year, the best opportunities for expansion and linking core habitat areas and stepping stones will be identified in consultation with landowners, and the Nature Recovery map will be refined with more detail added. There are plans to run a programme of farm walks and events with expert speakers and to offer one-to-one visits to the new cluster members. Once the landowner input to the Nature Recovery map has been completed, the next stage will be to begin the process of engaging with local communities and using the Natural Cambridgeshire Parish Nature Recovery Toolkit to promote community led action.



Cambridge Nature Network

The Cambridge Nature Network is now well under way after being launched in May 2020. The vision of the network is to have significant areas of downland, fens, meadows, woodlands, and waterways providing natural spaces where people can experience the countryside and nature on their doorstep.

Over the last year we have finalised our first piece of work – a report, produced in response to the rapid growth of Cambridge and the twin threats of the biodiversity and climate emergencies. This report identifies the best opportunities for the creation of priority habitats that will help to deliver the Cambridgeshire Doubling Nature aspirations. This spatial plan for nature is already helping to inform planning and policy making, such as the Greater Cambridge Local Plan and Cambridge Biodiversity Strategy.

A partnership of organisations that support a nature network, and who share an interest in nature and public access to it, has begun to form including Cambridge Past, Present & Future, Wildlife Trust BCN, National Trust, Cambridge City Council, Cambridge Sport's Lake Trust, Cambridge University Botanic Garden, RSPB, Magog Trust and South Cambridgeshire District Council. Discussions are also underway with other landowners – these range from institutions such as the Cambridge University Colleges and County Council to large farming businesses and smaller family farms.

The Cambridge Nature Network has recently secured funding from government's Green Recovery Challenge Fund and also from Natural England. This backing is enabling us to take forward 24 projects that will help create or enhance nearly 100 hectares of natural greenspace by early 2023. We hope that this demonstration of success will be a springboard for further nature recovery, nature-friendly farming and wildlife-rich suburbs and villages.

A new website has been created www.cambridgenaturenetwork.org where you can view the report and find out more.



A Fund to underpin Doubling Nature Ambitions

Helping to double nature will cost money. To fulfil some elements of our landscape vision, for instance at Great and Wicken Fens, our partners will need to buy land. Farmers will need rewarding for managing land for nature. Communities need funds to buy trees and build ponds.

Rather than seeing this as a cost, we should consider these plans as investments, many of which will create value and investment return, in the same way as purchasing new machinery might help a company to improve efficiency.

Creating or restoring habitats that help make the air cleaner, retain water, provide access to nature or create jobs in tourism and conservation are investments in our future, not one-off burdens on current resources.

We are currently working closely with Mayor Dr Nik Johnson and officers of the Combined Authority to explore the idea of creating a **multi-million-pound Doubling Nature Investment Fund** to deliver our ambitions, seeking initial enabling funding, to be matched by business and individuals.

Natural Cambridgeshire is actively championing the creation of a single environmental fund for nature. Initially we are targeting c£30 million for the Doubling Nature Fund which would allow us to allocate (these are approximate allocations to offer a sense of what we want to do):

- £300K to create a baseline for the doubling nature agenda so that we understand the state of nature now and measure our success scientifically
- £4 million for community projects for grants and advice to help local people deliver nature recovery in their area – planting trees, hedges and wildflowers
- £2.5 million for key projects within each of the six priority landscape projects to support land purchase, capital grants, access improvements, health and wellbeing projects
- £2 million in matched funding to work with private sector partners and landowners on key projects to support wildlife friendly farming projects outside of the priority areas
- £4 million for urban greening projects

- Establish a £5 million endowment fund with the target of attracting a further £5 million of individual/corporate donations over a 10-year period that would generate £400K of grants a year in perpetuity for Doubling Nature projects.

We recognise that careful planning will be required to ensure the governance and management of the Fund, and that the future income to the Fund has the potential to be drawn from a wide variety of sources, including public, private, philanthropic and individual, and perhaps eventually Environmental Land Management (ELM), Biodiversity Net Gain (BNG) and carbon offsetting payments.

Donors and supporters

Contributions towards running costs from the following organisations that have enabled the organisation to employ a part-time co-ordinator to establish the charity in its first year have been gratefully received from:

Cambridge City Council

Cambridgeshire County Council

East Cambridgeshire District Council

South Cambridgeshire District Council

Cambridgeshire and Peterborough Future Parks (a grant funded project funded by the National Lottery Heritage Fund, the National Trust and the Ministry of Housing, Communities and Local Government)

Nene Park Trust

RSPB

Wildlife Trust BCN

With thanks also to **Nene Park Trust** for employment and payroll services and **Peterborough City Environment Trust** for communications expertise.

Natural Cambridgeshire is a registered charity in England and Wales no.1193040.

Registered address: c/o Athene Communications Ltd,
25 Priestgate, Peterborough, PE1 1JL.

Email: info@naturalcambridgeshire.org.uk

www.naturalcambridgeshire.org.uk

